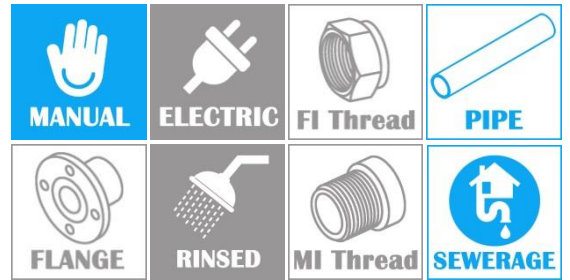
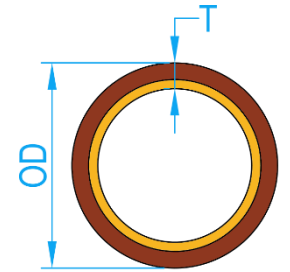
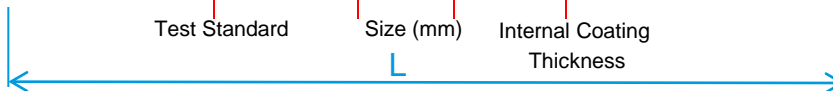


# EPOXY COATED HUBLESS PIPE

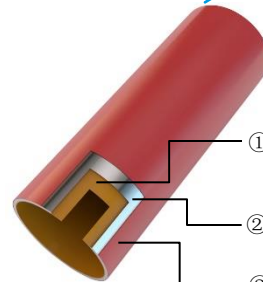
COMPLY WITH EN877:2010 01



**norika** EN877 DN100x3000mm 240µm 24/07/21



CROSS SECTIONAL VIEW



- ① Internal epoxy resin coating with high Quality properties (240µm~ 280µm)
- ② Grey Cast Iron
- ③ High quality primer External coating (80µm ~ 100µm)

## COATING CHARACTERISTIC

### Pipes:

- The inner wall of the tube: two-component epoxy resins consists of a resin and a hardener component.
- The outer wall of the tube: The senior red iron alkyl enamel coating.

## COMPONENT PARTS

| ITEM | LAYERS           | THICKNESS |
|------|------------------|-----------|
| 1    | External Coating | 80~100µm  |
| 2    | Cast Iron        | EN1561    |
| 3    | Internal Coating | 240~280µm |

\* Availability upon request.

## DIMENSIONS

| SKU             | DN (mm) | OD MAX (mm) | OD MIN (mm) | T- NOMINAL (mm) | T- MIN (mm) | L [mm] | WEIGHT (kg) |
|-----------------|---------|-------------|-------------|-----------------|-------------|--------|-------------|
| PIPHUB050EPC240 | 50      | 60.0        | 57.0        | 3.5             | 3.0         | 3000   | 13.0        |
| PIPHUB080EPC240 | 75      | 85.0        | 82.0        | 3.5             | 3.0         | 3000   | 18.9        |
| PIPHUB100EPC240 | 100     | 112.0       | 109.0       | 3.5             | 3.0         | 3000   | 25.2        |
| PIPHUB125EPC240 | 125*    | 137.0       | 133.0       | 4.0             | 3.5         | 3000   | 35.4        |
| PIPHUB150EPC240 | 150     | 162.0       | 158.0       | 4.0             | 3.5         | 3000   | 42.2        |
| PIPHUB200EPC240 | 200     | 212.0       | 208.0       | 5.0             | 4.0         | 3000   | 69.3        |
| PIPHUB250EPC240 | 250*    | 276.5       | 271.5       | 5.5             | 4.5         | 3000   | 99.8        |
| PIPHUB300EPC240 | 300*    | 328.5       | 323.5       | 6.0             | 5.0         | 3000   | 129.7       |