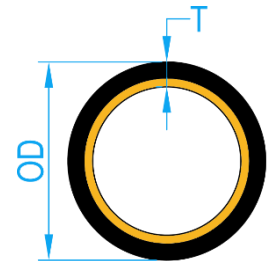
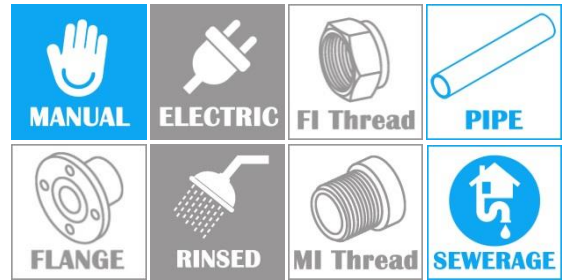
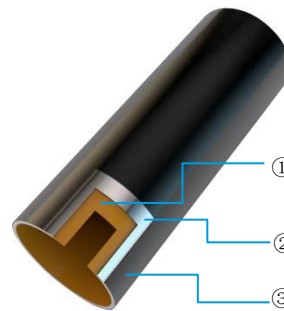
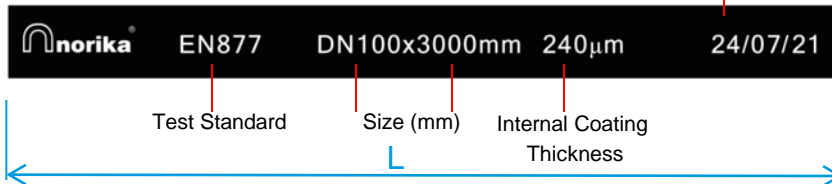


EPOXY COATED HUBLESS PIPE

COMPLY WITH EN877:2010 01



CROSS SECTIONAL VIEW



- ① Internal epoxy resin coating with high Quality properties (240µm~ 280µm)
- ② Grey Cast Iron
- ③ High quality primer External coating (80µm ~ 100µm)

COATING CHARACTERISTIC

Pipes:

- The inner wall of the tube: two-component epoxy resins consists of a resin and a hardener component.
- The outer wall of the tube: The senior red iron alkyd enamel coating.

COMPONENT PARTS

ITEM	LAYERS	THICKNESS
1	External Coating	80~100µm
2	Cast Iron	EN1561
3	Internal Coating	240~280µm

* Availability upon request.

DIMENSIONS

SKU	DN (mm)	OD MAX (mm)	OD MIN (mm)	T- NOMINAL (mm)	T- MIN (mm)	L [mm]	WEIGHT (kg)
PIPHUB050EPCB240	50	60.0	57.0	3.5	3.0	3000	13.0
PIPHUB080EPCB240	75	85.0	82.0	3.5	3.0	3000	18.9
PIPHUB100EPCB240	100	112.0	109.0	3.5	3.0	3000	25.2
PIPHUB125EPCB240	125*	137.0	133.0	4.0	3.5	3000	35.4
PIPHUB150EPCB240	150	162.0	158.0	4.0	3.5	3000	42.2
PIPHUB200EPCB240	200	212.0	208.0	5.0	4.0	3000	69.3
PIPHUB250EPCB240	250*	276.5	271.5	5.5	4.5	3000	99.8
PIPHUB300EPCB240	300*	328.5	323.5	6.0	5.0	3000	129.7