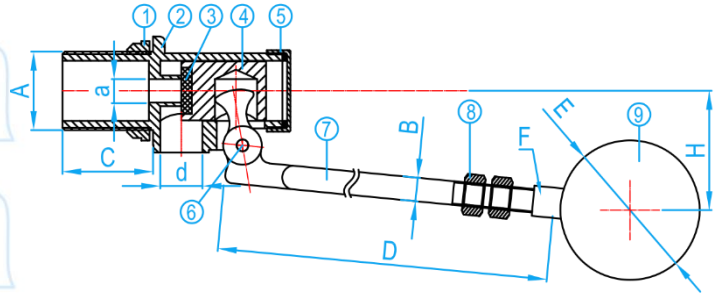
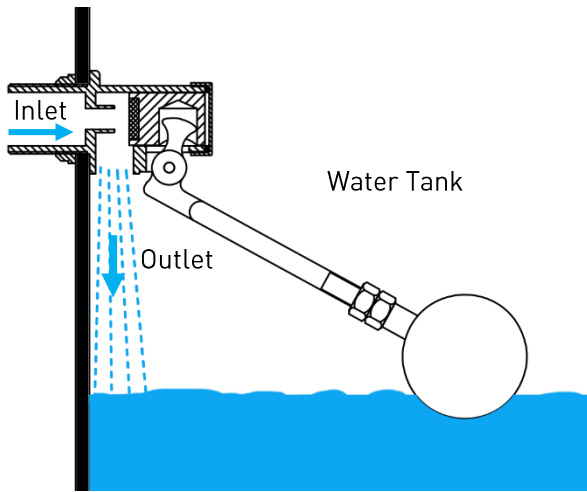


DZR BRASS BALL FLOAT VALVE

COMPLY WITH BS1212 : PART1 : 1990


 Accessories Rubber seal kit:
BFVN015~042RK

CROSS SECTIONAL VIEW

*Note: Rods are customisable


COMPONENT PARTS

ITEM	PARTS	MATERIAL
1	Lock nut	Brass
2	Body	DZR Brass
3	Disc	EPDM
4	Piston	DZR Brass
5	Cap	Brass
6	Pins	AISI304
7	Float Rod	Brass
8	Nut	Brass
9	Ball	AISI304, AISI316 Optional PE (For 15mm, 20mm, 25mm)

STANDARD SPECIFICATIONS

Working Pressure	14 Bar
Operating Temperature	20° ~ 65°C
Applicable Medium	Water

DIMENSIONS

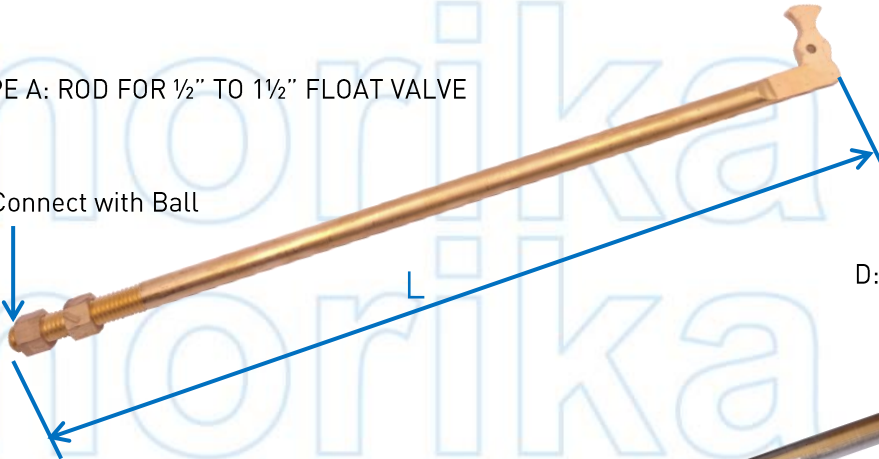
SKU	A (inch)	a (mm)	B (mm)	C (mm)	d (mm)	D (mm)	Ball SKU E (mm)	F (inch)	Valve Closing Distance H (mm)	WEIGHT (kg)
BFVN015150	1/2" BSP	3	8	35	12.5	150	BFVNB100	5/16"	83	0.48
BFVN015	1/2" BSP	3	8	35	12.5	280	BFVNB100	5/16"	125	0.49
BFVN020	3/4" BSP	8	8	35	15.0	335	BFVNB100	5/16"	140	0.59
BFVN025	1" BSP	10	8	35	18.0	387	BFVNB165	M10	150	1.20
BFVN035	1 1/4" BSP	11	9.8	50	21.0	411	BFVNB200	1/2"	185	2.06
BFVN042	1 1/2" BSP	16	12.4	45	28.0	540	BFVNB200	1/2"	205	2.40

BRASS STUB/LEVER FOR BALL FLOAT VALVE



TYPE A: ROD FOR 1/2" TO 1 1/2" FLOAT VALVE

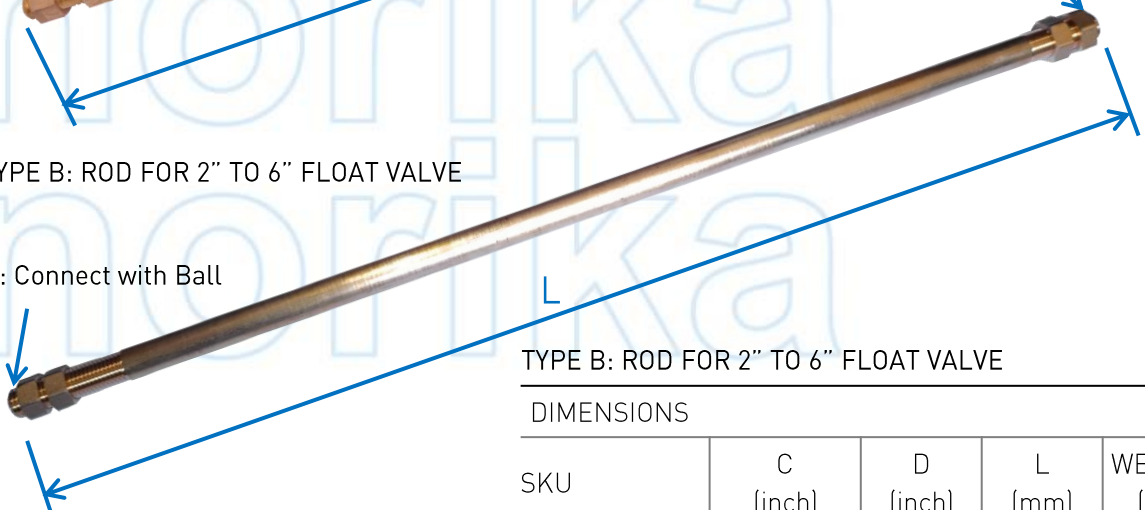
C: Connect with Ball



D: Connect with chuck

TYPE B: ROD FOR 2" TO 6" FLOAT VALVE

C: Connect with Ball



TYPE B: ROD FOR 2" TO 6" FLOAT VALVE

TYPE A: ROD FOR 1/2" TO 1 1/2" FLOAT VALVE

DIMENSIONS

SKU	C (inch)	L (mm)	WEIGHT (kg)
BFVN015S	5/16"	280	0.130
BFVN020S	5/16"	335	0.145
BFVN025S	M10	387	0.260
BFVN035S	1/2"	411	0.460
BFVN042S	1/2"	540	0.610

DIMENSIONS

SKU	C (inch)	D (inch)	L (mm)	WEIGHT (kg)
BFVN050S	1/2"	M13	450	0.520
BFVN065S	1/2"	M13	436	0.575
BFVN080S	7/8"	M22	485	1.605
BFVN100S	7/8"	M22	535	1.780
BFVN100S640	7/8"	M22	640	2.187
BFVN100S860	7/8"	M22	860	2.907
BFVN100S900	7/8"	M22	900	3.027
BFVN100S1000	7/8"	M22	1000	3.357
BFVN100S1200	7/8"	M22	1200	4.007
BFVN100S1400	7/8"	M22	1400	4.650
BFVN150S	7/8"	M24	860	3.295
BFVN150S1200	7/8"	M24	1200	4.789
BFVN150S1400	7/8"	M24	1400	5.560