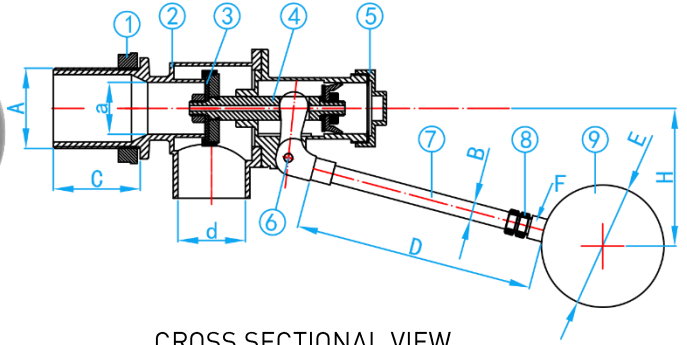


# BRONZE BALL FLOAT VALVE

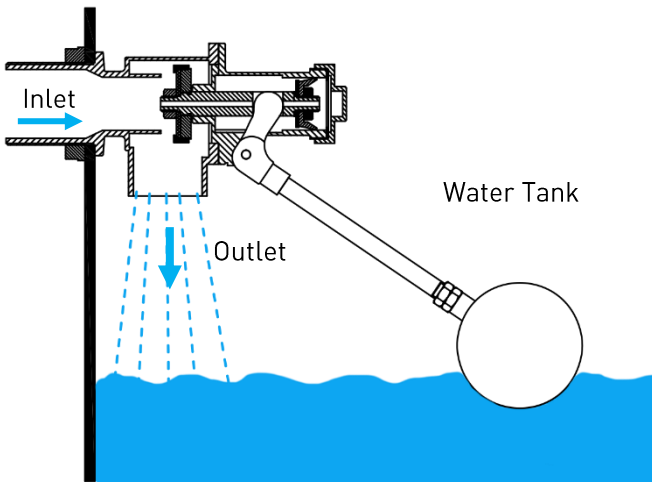
COMPLY WITH BS1212 : PART1 : 1990



Accessories Rubber seal kit:  
BFVN050~150RK



CROSS SECTIONAL VIEW



\*Note: Rods are customizable

COMPONENT PARTS

ITEM	PARTS	MATERIAL
1	Lock nut	Brass
2	Body	Bronze
3	Disc	EPDM
4	Piston	DZR Brass
5	Cap	Brass
6	Pins	AISI304
7	Float Rod	Brass
8	Nut	Brass
9	Ball	AISI304

STANDARD SPECIFICATIONS

Working Pressure	50mm~100mm: 14 Bar 150mm: 5.5 Bar
Operating Temperature	20° ~ 65°C
Applicable Medium	Water

DIMENSIONS

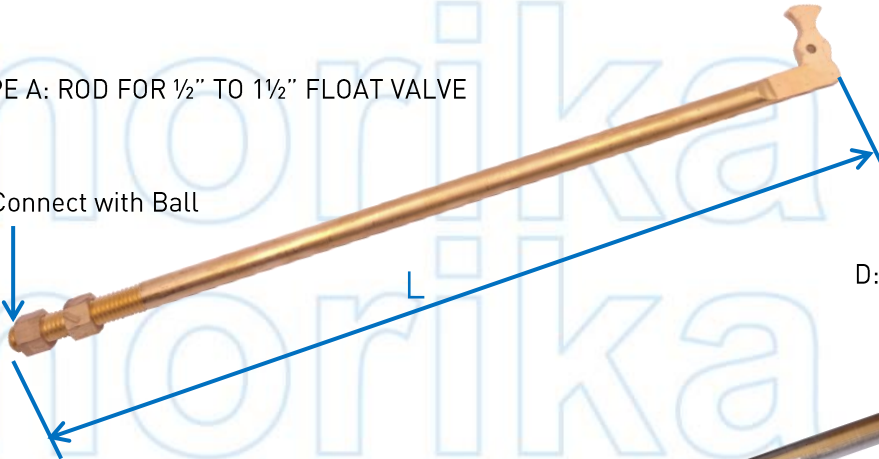
SKU	A (inch)	a (mm)	B (mm)	C (mm)	d (mm)	D (mm)	Ball SKU E (mm)	F (inch)	Valve Closing Distance H (mm)	WEIGHT (kg)
BFVN050	2" BSP	43.0	13	45	50	450	BFVNB250	1/2"	260	5.35
BFVN065	2 1/2" BSP	50.0	14	70	62	436	BFVNB300	1/2"	305	8.80
BFVN080	3" BSP	71.7	22	86	72	485	BFVNB400	7/8"	310	17.00
BFVN100	4" BSP	101.0	22	101	100	535	BFVNB400	7/8"	360	26.60
BFVN150	6" BSP	112.0	24	130	150	860	BFVNB400	7/8"	460	37.70

# BRASS STUB/LEVER FOR BALL FLOAT VALVE



TYPE A: ROD FOR 1/2" TO 1 1/2" FLOAT VALVE

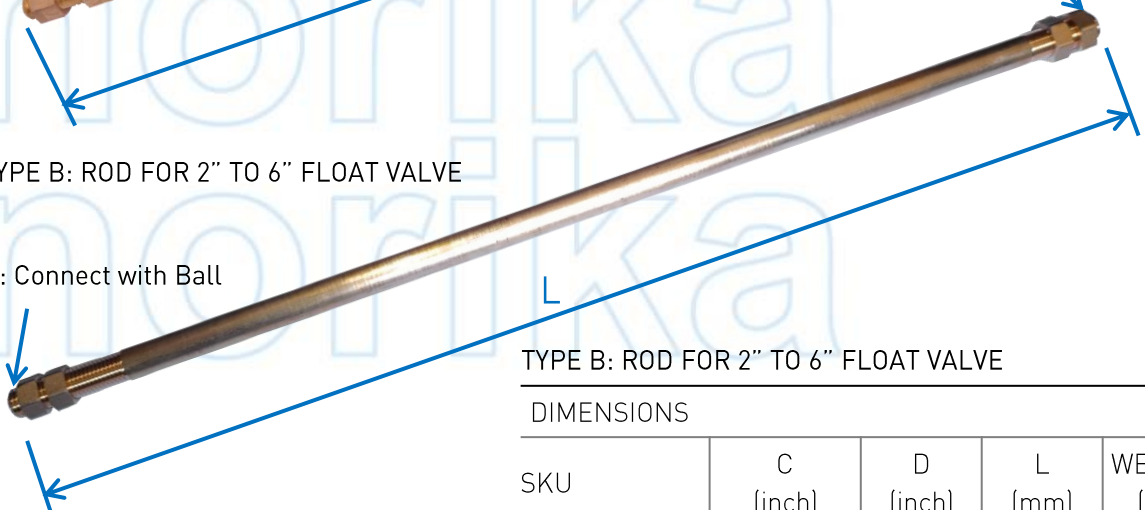
C: Connect with Ball



D: Connect with chuck

TYPE B: ROD FOR 2" TO 6" FLOAT VALVE

C: Connect with Ball



TYPE B: ROD FOR 2" TO 6" FLOAT VALVE

DIMENSIONS

SKU	C (inch)	D (inch)	L (mm)	WEIGHT (kg)
BFVN050S	1/2"	M13	450	0.520
BFVN065S	1/2"	M13	436	0.575
BFVN080S	7/8"	M22	485	1.605
BFVN100S	7/8"	M22	535	1.780
BFVN100S640	7/8"	M22	640	2.187
BFVN100S860	7/8"	M22	860	2.907
BFVN100S900	7/8"	M22	900	3.027
BFVN100S1000	7/8"	M22	1000	3.357
BFVN100S1200	7/8"	M22	1200	4.007
BFVN100S1400	7/8"	M22	1400	4.650
BFVN150S	7/8"	M24	860	3.295
BFVN150S1200	7/8"	M24	1200	4.789
BFVN150S1400	7/8"	M24	1400	5.560

TYPE A: ROD FOR 1/2" TO 1 1/2" FLOAT VALVE

DIMENSIONS

SKU	C (inch)	L (mm)	WEIGHT (kg)
BFVN015S	5/16"	280	0.130
BFVN020S	5/16"	335	0.145
BFVN025S	M10	387	0.260
BFVN035S	1/2"	411	0.460
BFVN042S	1/2"	540	0.610