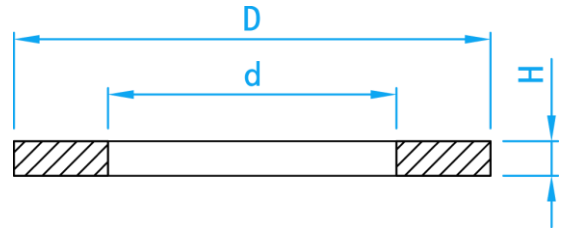
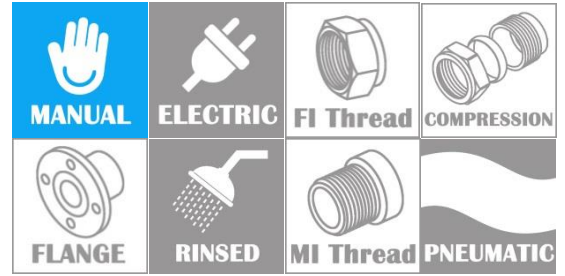


STAINLESS STEEL FLAT WASHERS



SECTION VIEW

COMPONENT PARTS

MATERIAL	AISI304 (AISI316 Optional)
----------	----------------------------

DIMENSIONS

SKU	SIZE (mm)	D (mm)	d (mm)	H (mm)	KG/CTN
SSW14	1/4"	18.48-19.00	6.40-6.70	1.35-1.75	25 kg
SSW516	5/16"	22.05-22.98	9.40-9.90	1.60-2.20	25 kg
SSW38	3/8"	25.12-25.90	10.55-11.38	1.35-1.83	25 kg
SSW12	1/2"	31.18-31.75	14.29-15.08	1.70-2.25	25 kg
SSW58	5/8"	37.58-38.40	17.47-18.25	2.65-3.25	25 kg
SSW34	3/4"	44.38-45.00	20.64-21.43	2.95-3.65	25 kg
SSW78	7/8"	57.05-57.80	23.66-24.56	3.10-3.75	25 kg
SSW1	1"	68.05-68.80	26.66-27.56	4.10-4.75	25 kg
SSWM6	M6	13.50-14.00	6.40-6.70	1.05-1.45	25 kg
SSWM8	M8	17.50-18.00	8.40-8.70	1.30-1.70	25 kg
SSWM10	M10	20.48-21.00	10.50-10.77	1.30-1.70	25 kg
SSWM12	M12	23.40-24.00	13.00-13.50	1.60-2.20	25 kg
SSWM16	M16	29.40-30.00	17.00-17.50	2.60-3.40	25 kg