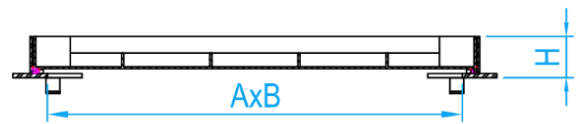


STAINLESS STEEL LIGHT DUTY AIRTIGHT & WATERTIGHT RECESSED COVER & FRAME

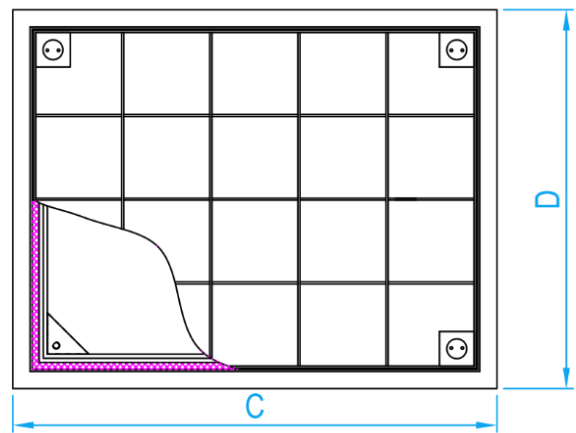
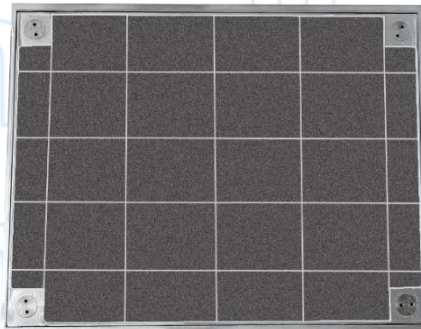


COMPLY WITH SS EN 124-2:2021
SS 30:1999 (2012)
BS 9124:2008

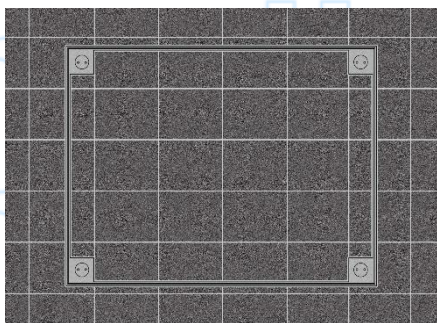
Type of Weight (Symbol)	SS 30	Design Load	Place of Installation	SS EN 124-2	Design Load
	C	30KN	In precincts which are inaccessible to motor vehicles.	A15	30KN



SECTION VIEW

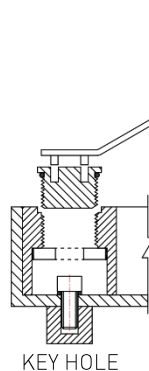


TOP VIEW

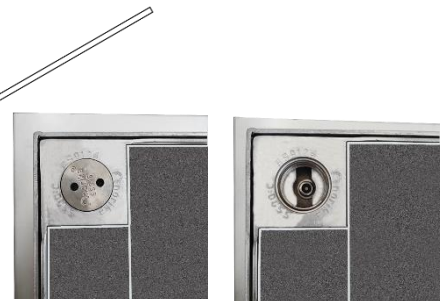


INSTALLATION EFFECT

Norika designed keyhole system



KEY HOLE



Note: 4 bolts and rubber seal to ensure airtight and watertight.

DIMENSIONS

SKU	MATERIAL	INTERNAL OPENING AxB (mm)	EXTERNAL CxD (mm)	HEIGHT H (mm)	Remarks/ Optional
SSRICCAT	Stainless Steel 304	600x450	700x550	64.5	Air / Water Tight
SSRICCAT316L	Stainless Steel 316L	600x450	700x550	64.5	Air / Water Tight