
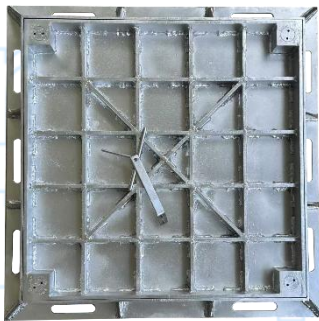


# S/STEEL MEDIUM DUTY AIRTIGHT & WATERTIGHT RECESSED MANHOLE COVER & FRAME



COMPLY WITH SS EN 124-2:2021 (250KN)  
BS 9124:2008

Type of Weight (Symbol)	SS30 Grade	Design Load	Place of Installation	SS EN124-2	Design Load
	A2	230KN	In carriageways not exceeding 0.5m away from kerb side channels of all roads and in carriageways of minor residential roads.	C250	250KN



Key Hole Cover  
SKU: SSRICC-KHC

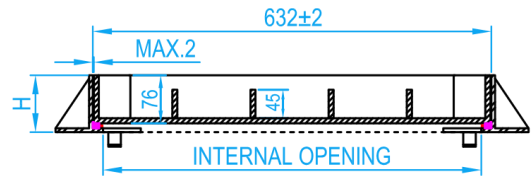


Key For Cover  
SKU: SSRICC-K

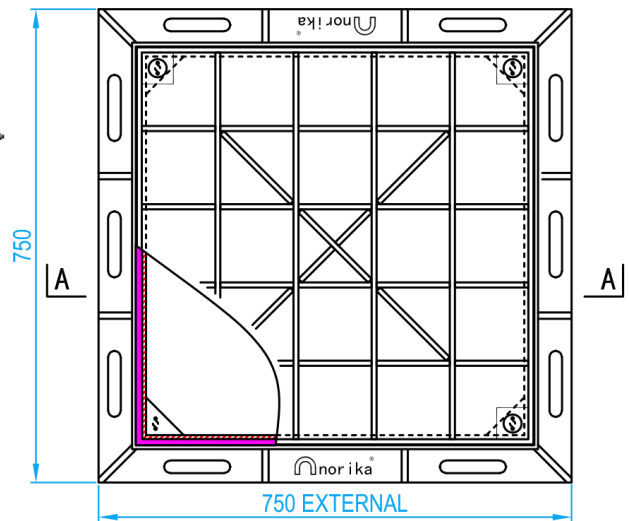


INSTALLATION EFFECT

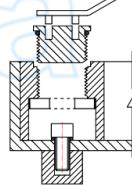
Norika designed keyhole system



SECTION A-A



TOP VIEW



KEY HOLE



Note: 4 bolts and rubber seal to ensure airtight and watertight.

## STANDARD SPECIFICATIONS

SKU	MATERIAL	INTERNAL OPENING (mm)	EXTERNAL (mm)	H (mm)	COVER THICKNESS (mm)	Remarks / Optional
SSMDRMCAT-A2	AISI304	600 X 600	750 X 750	90	8	Air / Water Tight
SSMDRMCAT316L-A2	AISI316L	600 X 600	750 X 750	90	8	Air / Water Tight