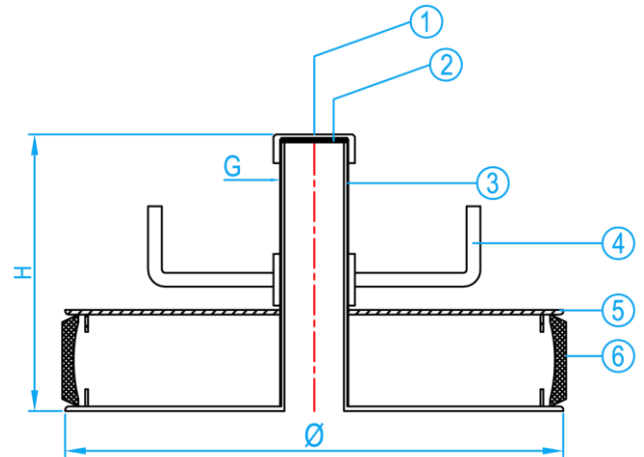
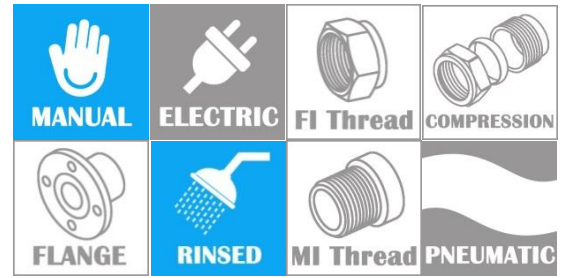


MULTI-LOCK DRAIN TEST PLUGS



CROSS SECTION VIEW

OPERATING INSTRUCTIONS

1	Select the correct size of the plug to suit the internal diameter of the pipe.
2	Remove any grease or foreign material from installation point.
3	Ensure no dirt is trapped between seal of plug and plates.
4	Ensure plug is inserted square to pipe wall.
5	Ensure wing nut and sealing cap are fully tighten.

COMPONENT PARTS

ITEM	PARTS	MATERIAL
1.	Cap	Galvanized Iron
2.	Rubber Washer	Natural Rubber
3.	Screw	Galvanized Iron
4.	Nut	Galvanized Iron
5.	Plate	Galvanized Iron
6.	Rubber	Natural Rubber

STANDARD SPECIFICATIONS

SKU	SIZE(mm)	G (inch)	H (mm)	Ø (mm)	RANGE MIN/MAX (mm)	WEIGHT (kg)
TP0375	375	2"	150	360	365-400	12.18
TP0400	400	2"	150	385	390-425	13.44
TP045050	450	2"	150	435	440-475	16.20
TP0500	500	2"	230	485	495-525	13.70
TP0525	525	2"	230	510	520-555	14.30
TP0550	550	2"	230	535	534-569	17.30
TP0600	600	2"	230	585	590-630	26.40