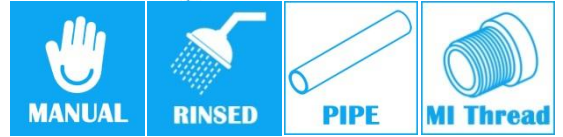
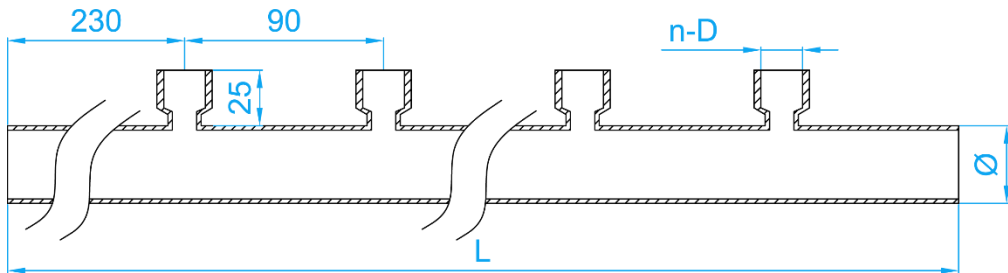


STAINLESS STEEL 304 PRESSFIT SINGLE SIDED MANIFOLDS



COMPLY WITH BSEN1254-2: 1998



CROSS SECTIONAL VIEW

* Size could be customized.

DIMENSIONS				
SKU	Ø×Thickness (mm)	n-D	L (mm)	WEIGHT (kg)
SS304NM03515FX04*	35×1.5	4NOS -G1/2" FI	1000	1.450

*This item requires special ordering. Please consult with a salesperson for the estimated lead time.