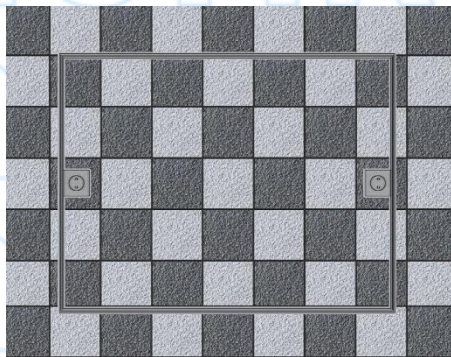
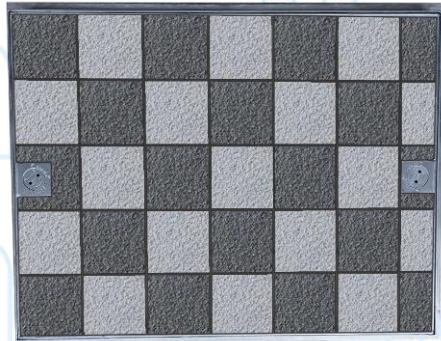


STAINLESS STEEL LIGHT DUTY RECESSED COVER & FRAME

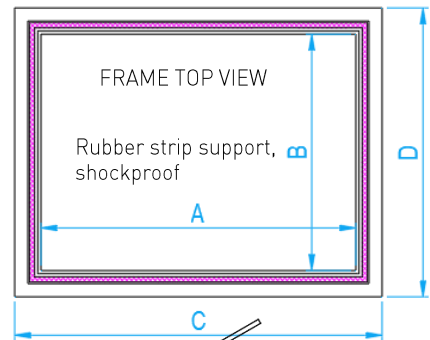
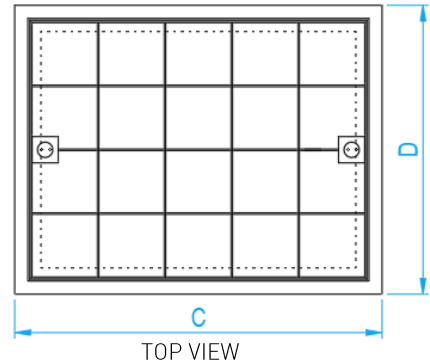
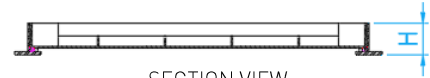
COMPLY WITH SS30:1999 (2012)



Type of Weight (Symbol)	SS30 Grade	Design Load	Place of Installation	EN124	Design Load
	C	30KN	In precincts which are inaccessible to motor vehicles.	A15	30KN



INSTALLATION EFFECT



Norika designed keyhole system

DIMENSIONS

SKU	MATERIAL	INTERNAL OPENING Ax B (mm)	EXTERNAL CxD (mm)	HEIGHT H (mm)	WEIGHT (kg)	Remarks/ Optional
SSRICC	Stainless Steel 304	600x450	700x550	63±3	21.2	Light Duty Recessed
SSRICC316L	Stainless Steel 316L	600x450	700x550	63±3	21.2	Light Duty Recessed