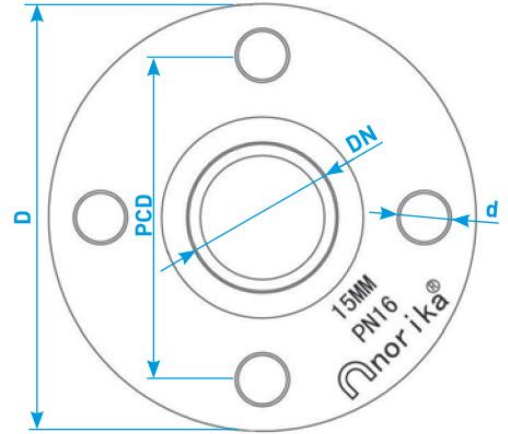
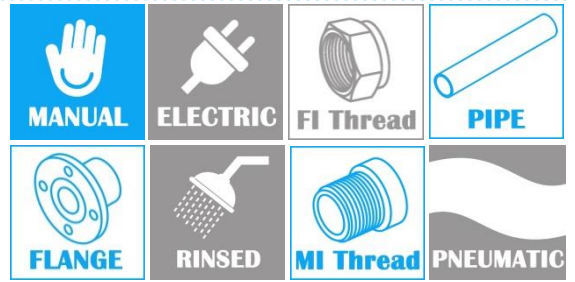
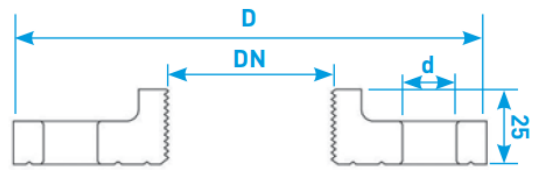


BRASS COMPANION FLANGE PN16

COMPLY WITH BS4504 PN16



TOP VIEW



CROSS SECTIONAL VIEW

COMPONENT PARTS

| PARTS | MATERIAL |
|--------|-----------|
| Flange | DZR Brass |

DIMENSIONS

| SKU | SIZE (mm) | DN (inch) | PCD (mm) | Nos OF HOLES | d [mm] | D [mm] | WEIGHT (kg) |
|-------------|-----------|------------|----------|--------------|--------|--------|-------------|
| BFPN16015 | 15 | 1/2" BSP | 65 | 4 | 14 | 95 | 0.8 |
| BFPN16020 | 20 | 3/4" BSP | 75 | 4 | 14 | 105 | 1.0 |
| BFPN16025 | 25 | 1" BSP | 85 | 4 | 14 | 115 | 1.2 |
| BFPN16035 | 35 | 1 1/4" BSP | 100 | 4 | 18 | 140 | 1.7 |
| BFPN16042 | 42 | 1 1/2" BSP | 110 | 4 | 18 | 150 | 2.0 |
| BFPN16050 | 54 | 2" BSP | 125 | 4 | 18 | 165 | 2.4 |
| BFPN16065 | 65 | 2 1/2" BSP | 145 | 4 | 18 | 185 | 2.9 |
| BFPN1608050 | 80X54 | 2" BSP | 160 | 8 | 18 | 200 | 3.0 |
| BFPN16080 | 80 | 3" BSP | 160 | 8 | 18 | 200 | 3.1 |
| BFPN1610050 | 100X54 | 2" BSP | 180 | 8 | 18 | 220 | 4.6 |
| BFPN1610065 | 100X65 | 2 1/2" BSP | 180 | 8 | 18 | 220 | 4.3 |
| BFPN1610080 | 100X80 | 3" BSP | 180 | 8 | 18 | 220 | 4.0 |
| BFPN16100 | 100 | 4" BSP | 180 | 8 | 18 | 220 | 3.6 |
| BFPN16150 | 150 | 6" BSP | 240 | 8 | 22 | 285 | 5.3 |