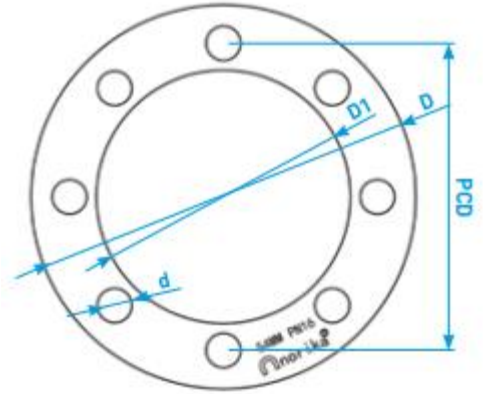
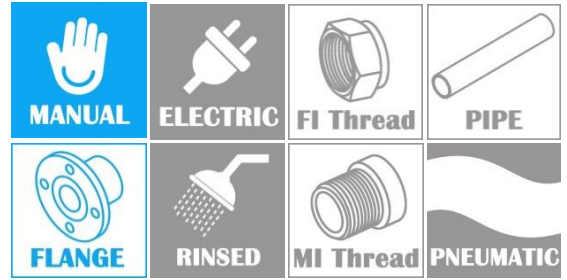
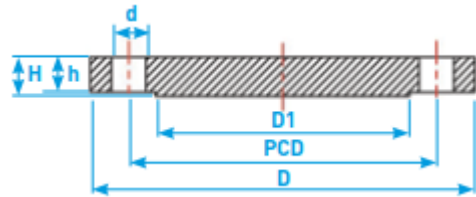


STAINLESS STEEL 304/316L BLANK FLANGE PN16

COMPLY WITH BS 4504 PN16



TOP VIEW



CROSS SECTIONAL VIEW

COMPONENT PARTS

PARTS	MATERIAL
Flange	AISI304 Or AISI316L

STANDARD SPECIFICATIONS

SKU		SIZE	D	D1	PCD	NOs OF HOLES	d	h	H	WEIGHT
AISI304	AISI316L	(mm)	(mm)	(mm)	(mm)		(mm)	(mm)	(mm)	(kg)
SS304FPN16BF015	SS316LFPN16BF015	15	95	45	65	4	14	2	14	0.64
SS304FPN16BF020	SS316LFPN16BF020	22	105	58	75	4	14	2	16	0.92
SS304FPN16BF025	SS316LFPN16BF025	28	115	68	85	4	14	2	16	1.20
SS304FPN16BF035	SS316LFPN16BF035	35	140	78	100	4	18	2	16	1.74
SS304FPN16BF042	SS316LFPN16BF042	42	150	88	110	4	18	3	18	1.92
SS304FPN16BF050	SS316LFPN16BF050	54	165	102	125	4	18	3	18	2.72
SS304FPN16BF065	SS316LFPN16BF065	65	185	122	145	4	18	3	20	3.48
SS304FPN16BF080	SS316LFPN16BF080	80	200	138	160	8	18	3	20	4.48
SS304FPN16BF100	SS316LFPN16BF100	100	220	158	180	8	18	3	22	5.47
SS304FPN16BF150	SS316LFPN16BF150	150	285	212	240	8	22	3	24	10.25
SS304FPN16BF200	SS316LFPN16BF200	200	340	268	295	12	22	3	26	15.80
SS304FPN16BF250	SS316LFPN16BF250	250	405	320	355	12	26	3	28	25.01
SS304FPN16BF300	SS316LFPN16BF300	300	460	378	410	12	26	4	30	35.15