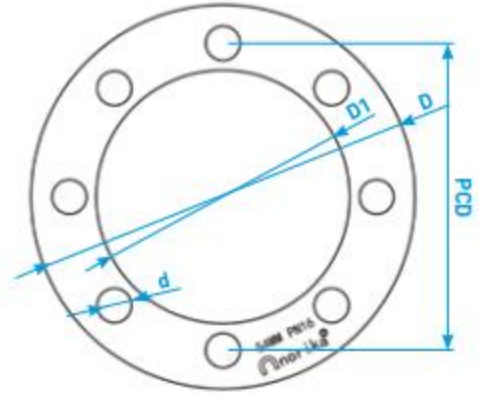
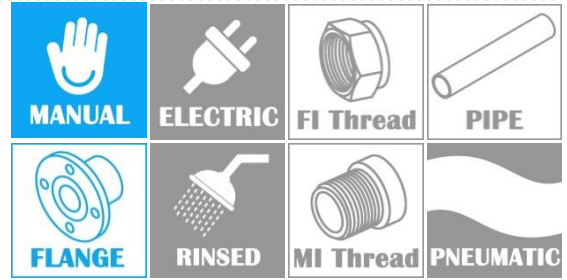
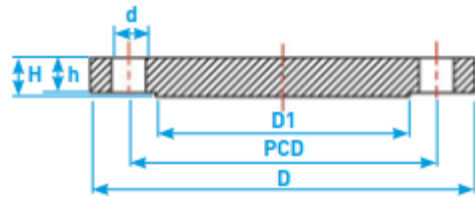


STAINLESS STEEL 304/316L BLANK FLANGE PN16

COMPLY WITH BS 4504 PN16



TOP VIEW



CROSS SECTIONAL VIEW

COMPONENT PARTS

PARTS	MATERIAL
Flange	AISI304 Or AISI316L

STANDARD SPECIFICATIONS

SKU		SIZE	D	D1	PCD	NOs OF HOLES	d	h	H	WEIGHT (kg)
AISI304	AISI316L	(mm)	(mm)	(mm)	(mm)		(mm)	(mm)	(mm)	
SS304FPN16015BF	SS316LFPN16015BF	15	95	45	65	4	14	2	14	0.64
SS304FPN16020BF	SS316LFPN16020BF	22	105	58	75	4	14	2	16	1.01
SS304FPN16025BF	SS316LFPN16025BF	28	115	68	85	4	14	2	16	1.23
SS304FPN16035BF	SS316LFPN16035BF	35	140	78	100	4	18	2	16	1.81
SS304FPN16042BF	SS316LFPN16042BF	42	150	88	110	4	18	3	18	2.09
SS304FPN16050BF	SS316LFPN16050BF	54	165	102	125	4	18	3	18	2.88
SS304FPN16065BF	SS316LFPN16065BF	65	185	122	145	4	18	3	20	3.66
SS304FPN16080BF	SS316LFPN16080BF	80	200	138	160	8	18	3	20	4.62
SS304FPN16100BF	SS316LFPN16100BF	100	220	158	180	8	18	3	22	5.65
SS304FPN16150BF	SS316LFPN16150BF	150	285	212	240	8	22	3	24	10.50
SS304FPN16200BF	SS316LFPN16200BF	200	340	268	295	12	22	3	26	15.80
SS304FPN16250BF	SS316LFPN16250BF	250	405	320	355	12	26	3	28	25.01
SS304FPN16300BF	SS316LFPN16300BF	300	460	378	410	12	26	4	30	35.15