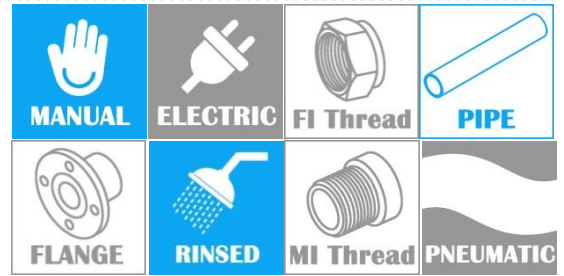
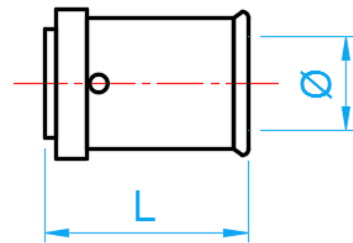


PEX PRESS-FIT FITTINGS

COMPLY WITH BS EN ISO 21003-1:2008
 BS EN ISO 21003-3:2008
 BS EN ISO 21003-5:2008
 BS EN 12165:2016
 AS/NZS 4020:2005
 SS 375:2015



F5 END CAP



SIDE VIEW

DIMENSIONS

SKU	SIZE (mm)	\varnothing (mm)	L (mm)	WEIGHT (kg)	PCS/CTN
PEXF5EC16	16	11.8	28.0	0.020	640
PEXF5EC20	20	15.8	28.0	0.029	448
PEXF5EC25	25	19.8	34.6	0.063	192
PEXF5EC32	32	25.8	34.6	0.094	128
PEXF5EC40	40	31.8	48.0	0.130	80
PEXF5EC50	50	40.8	48.0	0.184	72
PEXF5EC63	63	50.7	71	0.363	40
PEXF5EC75	75	59.6	71	0.665	20