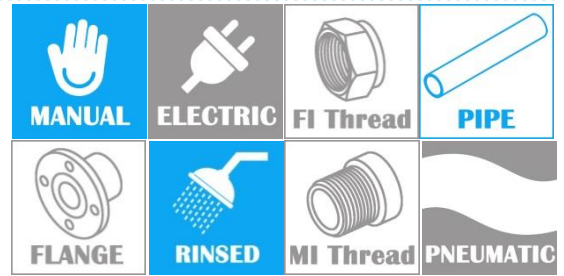
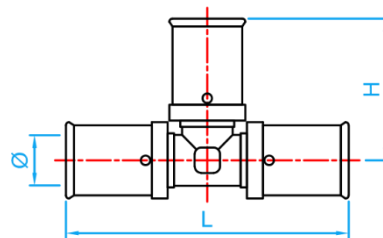


# PEX PRESS-FIT FITTINGS

COMPLY WITH BS EN ISO 21003-1:2008  
 BS EN ISO 21003-3:2008  
 BS EN ISO 21003-5:2008  
 BS EN 12165:2016  
 AS/NZS 4020:2005  
 SS 375:2015



## F5 EQUAL TEE



SIDE VIEW

### DIMENSIONS

SKU	SIZE (mm)	Ø (mm)	L (mm)	H (mm)	WEIGHT (kg)	PCS/CTN
PEXF5ET16	16	11.8	74	37.0	0.076	160
PEXF5ET20	20	15.8	80	40.0	0.100	112
PEXF5ET25	25	20.8	95	47.5	0.188	48
PEXF5ET32	32	25.8	101	50.5	0.272	32
PEXF5ET40	40	31.8	136	68.0	0.550	24
PEXF5ET50	50	40.8	145	72.5	0.811	18
PEXF5ET63	63	50.7	206	103.0	1.500	4
PEXF5ET75	75	59.6	216	108.0	2.167	3