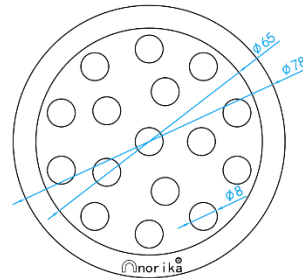
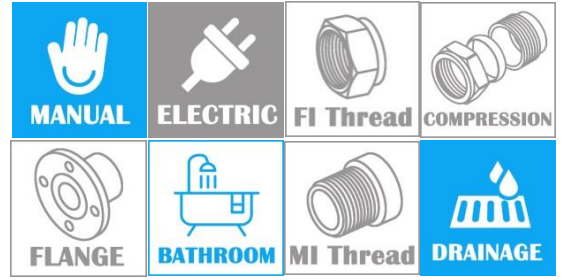
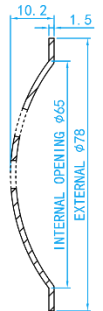


# AISI304L DOME GRATING



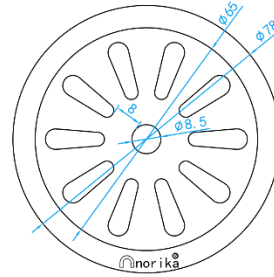
TOP VIEW



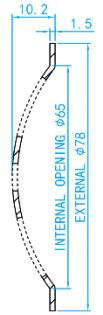
CROSS SECTIONAL VIEW

**STANDARD SPECIFICATIONS**

SKU	MATERIAL	SURFACE	INTERNAL OPENING(mm)	T (mm)	EXTERNAL (mm)	WEIGHT (kg)	PCS/CTN
SSDGN080HL	AISI304L	Hairline	65	1.5	78	0.045	400



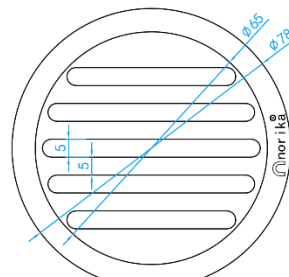
TOP VIEW



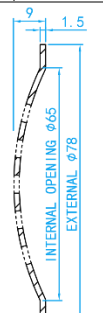
CROSS SECTIONAL VIEW

**STANDARD SPECIFICATIONS**

SKU	MATERIAL	SURFACE	INTERNAL OPENING(mm)	T (mm)	EXTERNAL (mm)	WEIGHT (kg)	PCS/CTN
SSDGN080HLA	AISI304L	Hairline	65	1.5	78	0.040	400



TOP VIEW



CROSS SECTIONAL VIEW

**STANDARD SPECIFICATIONS**

SKU	MATERIAL	SURFACE	INTERNAL OPENING(mm)	T (mm)	EXTERNAL (mm)	WEIGHT (kg)	PCS/CTN
SSDGN080HLEB	AISI304L	Hairline	65	1.5	78	0.045	400