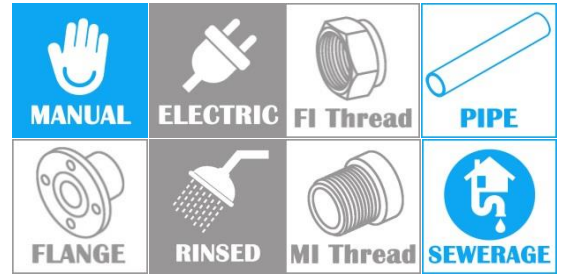


# CAST IRON HUBLESS PIPE & ACCESS OPENING

COMPLY WITH CISPI 301-12  
CISPI 310-12

## PIPES



CROSS SECTIONAL VIEW

### DIMENSIONS

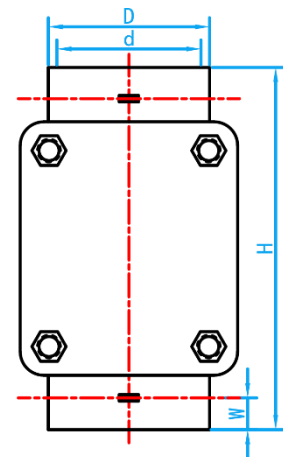
SKU	DN (mm)	D (mm)	d (mm)	L (mm)	WEIGHT (kg)
PIPHUB050	50	59.69±2.29	49.80±2.29	3042±5	14.5
PIPHUB080	75	85.09±2.29	75.20±2.29	3042±5	19.5
PIPHUB100	100	111.25 <sup>+2.29</sup> <sub>-1.27</sub>	100.08±2.29	3042±5	28.2
PIPHUB150	150	160.02 <sup>+2.29</sup> <sub>-1.27</sub>	150.88±2.29	3042±5	45.8
PIPHUB200	200	212.85 <sup>+3.30</sup> <sub>-2.29</sub>	201.68±3.30	3042±5	78.0
PIPHUB250	250	268.22±2.29	254.00±3.30	3042±5	117.0
PIPHUB300	300	317.50±2.29	303.28±3.30	3042±5	130.0

### COATING CHARACTERISTIC

#### Pipes:

- The inner wall of the tube: Black anti-corrosive paint.
- The outer wall of the tube: Special enamel paint.
- Coating Thickness: Internal wall min 40µm, Outer wall min 60µm .

## ACCESS OPENING



FRONT VIEW

### DIMENSIONS

SKU	SIZE (mm)	D (mm)	d (mm)	H (mm)	W (mm)	WEIGHT (kg)
HUBSP050	50	59.59	50.80	300	30	1.86
HUBSP080	75	85.09	76.21	300	30	2.44
HUBSP100	100	111.25	101.6	340	40	7.60
HUBSP150	150	160.02	150.88	400	45	14.50
HUBSP200	200	212.85	201.68	470	50	22.00

### COATING CHARACTERISTIC

#### Fittings:

- Inside and outside: Anti-corrosive paint.  
Coating Thickness: Internal wall min 40µm, outer wall min 40µm.