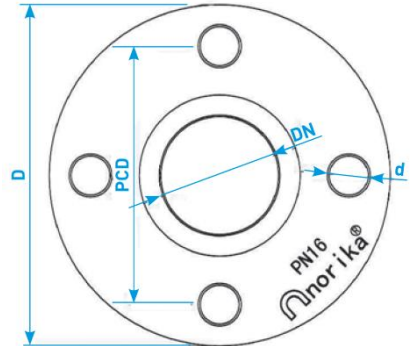
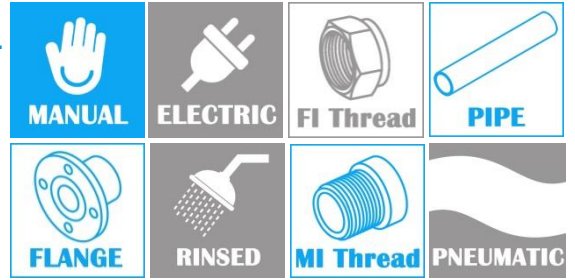
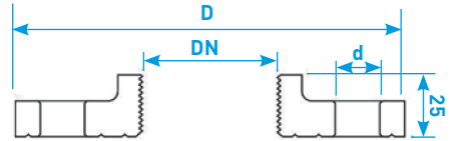


STAINLESS STEEL 304/ 316L COMPANION FLANGE PN16

COMPLY WITH BS4504 PN16



TOP VIEW



CROSS SECTIONAL VIEW

COMPONENT PARTS

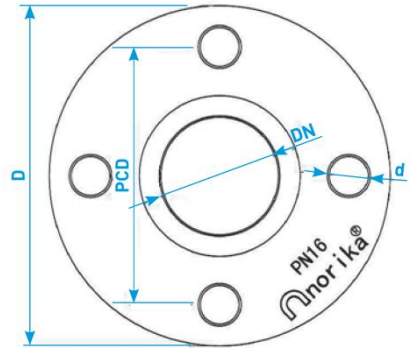
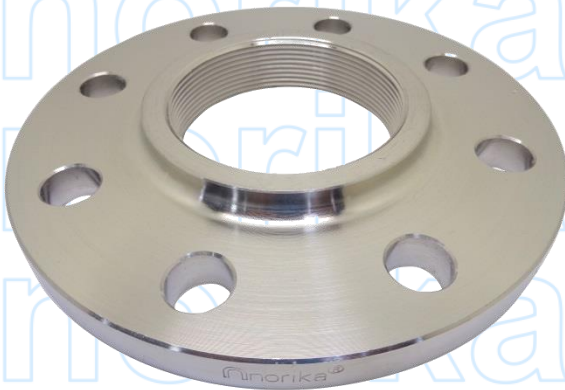
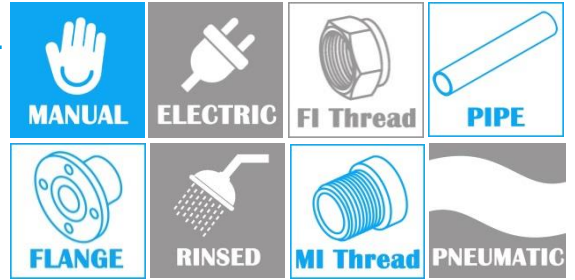
PARTS	MATERIAL
Flange	AISI304 Or AISI316L

DIMENSIONS

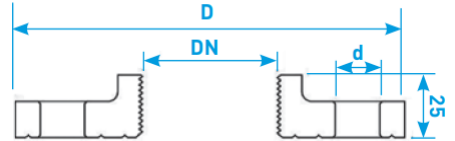
SKU		SIZE (mm)	PCD (mm)	NOs OF HOLES	d (mm)	D (mm)	WEIGHT (kg)
AISI304	AISI316L						
SS304FPN1604215	SS316LFPN1604215	42x15	110	4	18	143	-
SS304FPN1604220	SS316LFPN1604220	42x22					-
SS304FPN1604225	SS316LFPN1604225	42x28					-
SS304FPN1604235	SS316LFPN1604235	42x35					-
SS304FPN1604242	SS316LFPN1604242	42x42					-
SS304FPN1605015	SS316LFPN1605015	54x15	125	4	18	165	2.51
SS304FPN1605020	SS316LFPN1605020	54x22					2.49
SS304FPN1605025	SS316LFPN1605025	54x28					2.47
SS304FPN1605035	SS316LFPN1605035	54x35					2.42
SS304FPN1605042	SS316LFPN1605042	54x42					2.40
SS304FPN1605050	SS316LFPN1605050	54x54					2.20
SS304FPN1606515	SS316LFPN1606515	67x15	145	4	18	185	3.13
SS304FPN1606520	SS316LFPN1606520	67x22					3.14
SS304FPN1606525	SS316LFPN1606525	67x28					3.13
SS304FPN1606535	SS316LFPN1606535	67x35					3.06
SS304FPN1606542	SS316LFPN1606542	67x42					3.09
SS304FPN1606550	SS316LFPN1606550	67x54					2.95
SS304FPN1606565	SS316LFPN1606565	67x67					2.74

STAINLESS STEEL 304/ 316L COMPANION FLANGE PN16

COMPLY WITH BS4504 PN16



TOP VIEW



CROSS SECTIONAL VIEW

COMPONENT PARTS

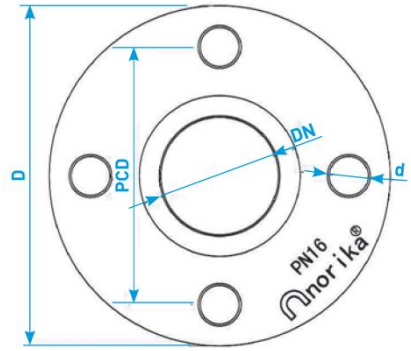
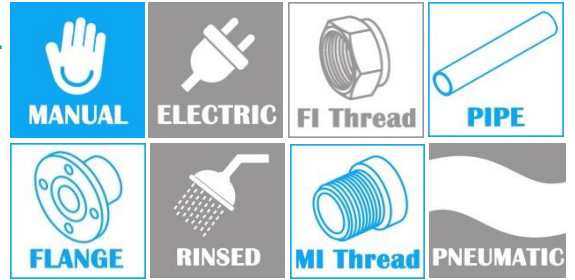
PARTS	MATERIAL
Flange	AISI304

DIMENSIONS

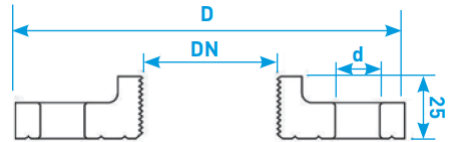
SKU		SIZE (mm)	PCD (mm)	NOs OF HOLES	d (mm)	D (mm)	WEIGHT (kg)
AISI304	AISI316L						
SS304FPN1608015	SS316LFPN1608015	76x15	160	8	18	200	3.61
SS304FPN1608020	SS316LFPN1608020	76x22					3.61
SS304FPN1608025	SS316LFPN1608025	76x28					3.56
SS304FPN1608035	SS316LFPN1608035	76x35					3.56
SS304FPN1608042	SS316LFPN1608042	76x42					3.44
SS304FPN1608050	SS316LFPN1608050	76x54					3.30
SS304FPN1608065	SS316LFPN1608065	76x67					3.24
SS304FPN1608080	SS316LFPN1608080	76x76					3.07
SS304FPN16100015	SS316LFPN16100015	108x15	180	8	18	220	4.30
SS304FPN16100020	SS316LFPN16100020	108x22					4.30
SS304FPN16100025	SS316LFPN16100025	108x28					4.30
SS304FPN16100035	SS316LFPN16100035	108x35					4.00
SS304FPN16100042	SS316LFPN16100042	108x42					4.25
SS304FPN16100050	SS316LFPN16100050	108x54					4.15
SS304FPN16100065	SS316LFPN16100065	108x67					4.00
SS304FPN16100080	SS316LFPN16100080	108x76					3.90
SS304FPN16100100	SS316LFPN16100100	108x108	4.85				

STAINLESS STEEL 304/ 316L COMPANION FLANGE PN16

COMPLY WITH BS4504 PN16



TOP VIEW



CROSS SECTIONAL VIEW

COMPONENT PARTS

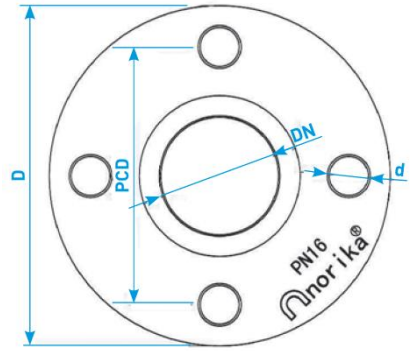
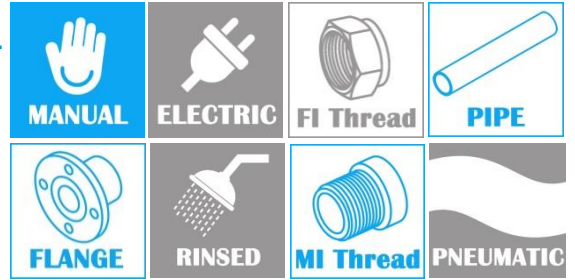
PARTS	MATERIAL
Flange	AISI304 Or AISI316L

DIMENSIONS

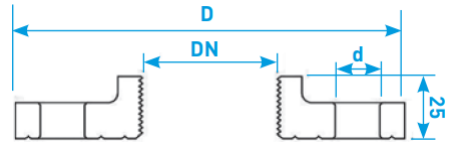
SKU		SIZE (mm)	PCD (mm)	NOs OF HOLES	d (mm)	D (mm)	WEIGHT (kg)
AISI304	AISI316L						
SS304FPN16150015	SS316LFPN1615015	150x15	240	8	22	285	7.40
SS304FPN16150020	SS316LFPN1615020	150x22					7.40
SS304FPN16150025	SS316LFPN1615025	150x28					7.40
SS304FPN16150035	SS316LFPN1615035	150x35					7.40
SS304FPN16150042	SS316LFPN1615042	150x42					7.30
SS304FPN16150050	SS316LFPN1615050	150x15					7.30
SS304FPN16150065	SS316LFPN1615065	150x22					7.09
SS304FPN16150080	SS316LFPN1615080	150x80					6.70
SS304FPN16150100	SS316LFPN16150100	150x100					6.40
SS304FPN16150150	SS316LFPN16150150	150x150					5.40

STAINLESS STEEL 304/ 316L COMPANION FLANGE PN16

COMPLY WITH BS4504 PN16



TOP VIEW



CROSS SECTIONAL VIEW

COMPONENT PARTS

PARTS	MATERIAL
Flange	AISI304 Or AISI316L

DIMENSIONS

SKU		SIZE (mm)	PCD (mm)	NOs OF HOLES	d (mm)	D (mm)	WEIGHT (kg)
AISI304	AISI316L						
SS304FPN1620015	SS316LFPN1620015	200x15	295	12	22	340	-
SS304FPN1620020	SS316LFPN1620020	200x22					-
SS304FPN1620025	SS316LFPN1620025	200x28					-
SS304FPN1620035	SS316LFPN1620035	200x35					-
SS304FPN1620042	SS316LFPN1620042	200x42					-
SS304FPN1620050	SS316LFPN1620050	200x15					-
SS304FPN1620065	SS316LFPN1620065	200x22					-
SS304FPN1620080	SS316LFPN1620080	200x80					-
SS304FPN16200100	SS316LFPN16200100	200x100					9.08
SS304FPN16200150	SS316LFPN16200150	200x150					8.33
SS304FPN16200200	SS316LFPN16200200	200x200	6.02				