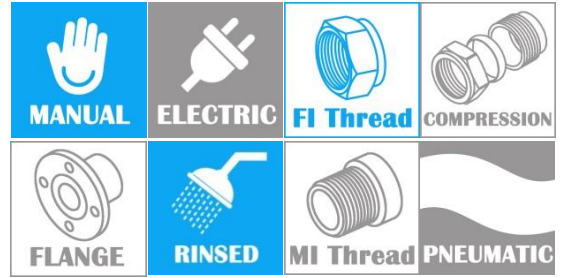
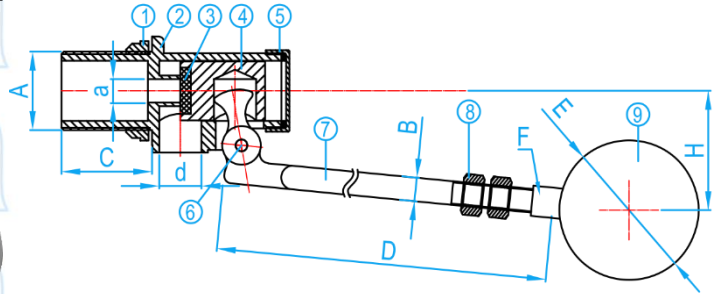
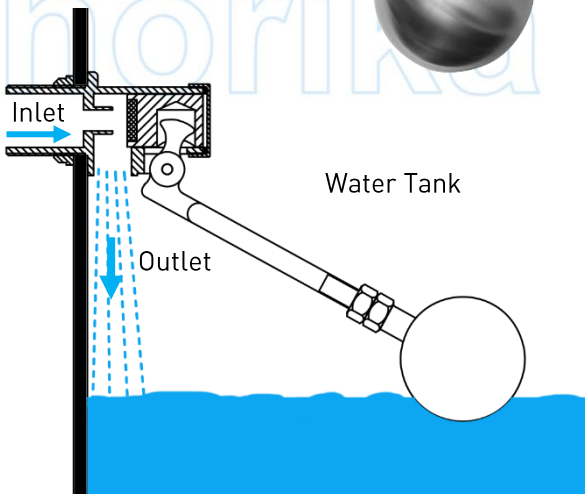


STAINLESS STEEL 316L BALL FLOAT VALVE

COMPLY WITH BS 1212-1 : 1990
BS 1968:1953



Accessories Rubber seal kit:
BFVN015~042RK



CROSS SECTIONAL VIEW

*Note: Rods are customisable

COMPONENT PARTS

| ITEM | PARTS | MATERIAL |
|------|-----------|----------|
| 1 | Lock nut | AISI316L |
| 2 | Body | AISI316L |
| 3 | Disc | EPDM |
| 4 | Piston | AISI316L |
| 5 | Cap | AISI316L |
| 6 | Pins | AISI316L |
| 7 | Float Rod | AISI316L |
| 8 | Nut | AISI316L |
| 9 | Ball | AISI316L |

STANDARD SPECIFICATIONS

| | |
|-----------------------|------------|
| Working Pressure | 14 Bar |
| Operating Temperature | 20° ~ 65°C |
| Applicable Medium | Water |

DIMENSIONS

| SKU | A (inch) | a (mm) | B (mm) | C (mm) | D (mm) | Ball SKU E (mm) | F (inch) | d (mm) | Valve Closing Distance H (mm) | WEIGHT (kg) |
|------------------|-------------|-----------|-----------|-----------|-----------|--------------------|-------------|-----------|-------------------------------------|----------------|
| BFVNSS316L015150 | 1/2" BSP | 3.0 | 8 | 32.5 | 150 | BFVNB100 | 5/16" | 12.5 | 83 | 0.48 |
| BFVNSS316L015 | 1/2" BSP | 3.0 | 8 | 32.5 | 280 | BFVNB100 | 5/16" | 12.5 | 125 | 0.52 |
| BFVNSS316L020 | 3/4" BSP | 8.0 | 8 | 35.0 | 335 | BFVNB100 | 5/16" | 15.0 | 140 | 0.53 |
| BFVNSS316L025 | 1" BSP | 10.0 | 10 | 38.5 | 385 | BFVNB165 | M10 | 18.0 | 150 | 1.15 |
| BFVNSS316L035 | 1 1/4" BSP | 11.0 | 13 | 49.5 | 415 | BFVNB200 | 1/2" | 21.0 | 185 | 2.10 |
| BFVNSS316L042 | 1 1/2" BSP | 16.0 | 13 | 50.0 | 540 | BFVNB200 | 1/2" | 28.0 | 205 | 2.30 |
| BFVNSS316L050 | 2" BSP | 38.5 | 13 | 64.5 | 485 | BFVNB200 | 1/2" | 50.0 | 260 | 5.20 |

* Valve Closing Distance Complies to PUB minimum requirement