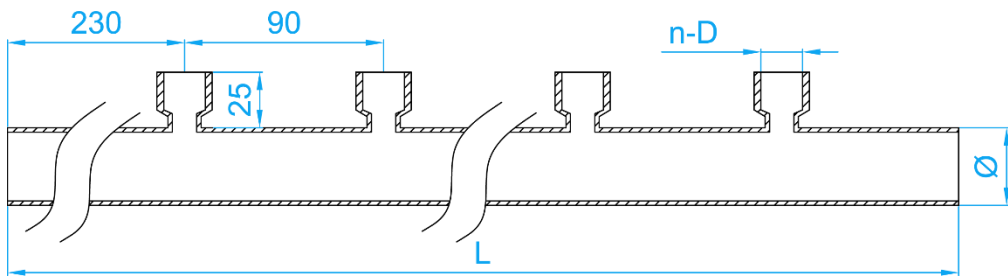
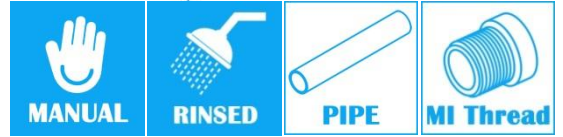


# STAINLESS STEEL 316L PRESSFIT SINGLE SIDED MANIFOLDS

COMPLY WITH BSEN1254-2: 1998



CROSS SECTIONAL VIEW

\* Size could be customized.

## DIMENSIONS

SKU	Ø×Thickness (mm)	n-D	L (mm)	WEIGHT (kg)
SS316LNM03515FX04*	35×1.5	4NOS -G1/2" FI	1000	1.450

\*This item requires special ordering. Please consult with a salesperson for the estimated lead time.