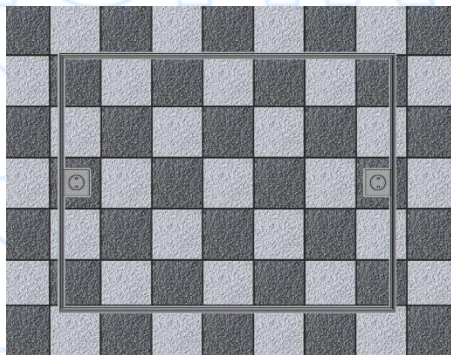
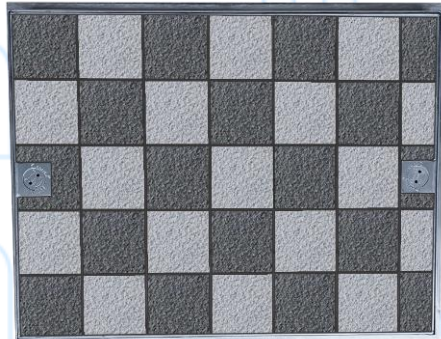


STAINLESS STEEL LIGHT DUTY RECESSED COVER & FRAME

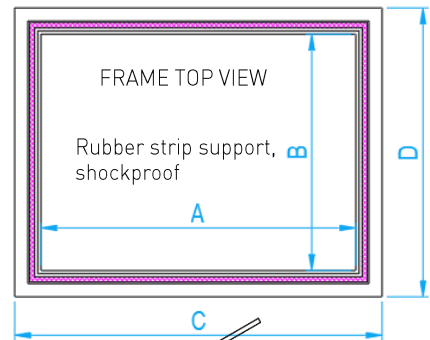
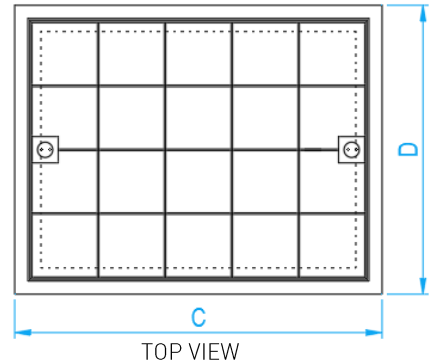
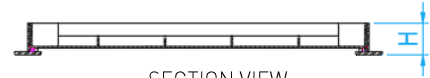


COMPLY WITH SS EN 124-2:2021
SS 30:1999 [2012]

Type of Weight (Symbol)	SS 30	Design Load	Place of Installation	SS EN 124-2	Design Load
	C	30KN	In precincts which are inaccessible to motor vehicles.	A15	30KN



INSTALLATION EFFECT



Norika designed keyhole system

DIMENSIONS

SKU	MATERIAL	INTERNAL OPENING AxB (mm)	EXTERNAL CxD (mm)	HEIGHT H (mm)	Remarks/ Optional
SSRICC	Stainless Steel 304	600x450	700x550	64.5	Light Duty Recessed
SSRICC316L	Stainless Steel 316L	600x450	700x550	64.5	Light Duty Recessed